



Redlands
c o a s t



Redland
CITY COUNCIL

LET'S Collabor8

to deliver Redlands Coast's
Federal election priorities



Redland City Council is committed to partnering with all levels of government to deliver for our community.

We have identified eight projects that will create more jobs, deliver more space for local families to play, protect attributes of our naturally wonderful environment and help our community travel around the city safer and faster.

1

Birkdale Community Precinct



The opportunity

Situated on former Commonwealth land and including Willard's Farm on Old Cleveland Road East, the 62-hectare Birkdale Community Precinct offers exciting intergenerational opportunities. Home to a World War II radio receiver and an historic farmstead, the property holds significant history, as well as large cleared areas, offering an opportunity for local families, businesses and community groups.

Council purchased these properties to save them from being developed into housing and we are committed to creating a lasting community legacy through a series of exciting projects, including:

- water play and recreation areas,
- a whitewater facility for the Brisbane 2032 Olympic and Paralympic Games,
- restoration of the historic Willard's Farm House and surrounding buildings,
- educational, agricultural and food areas,
- a communications and exhibition hub celebrating the property's historic role in the war, and
- a celebration of culture, including our First Nations cultures and European heritage.

This precinct also aligns with the Federal Government's support of the Games of the XXXV Olympiad and the opportunities it will deliver for tomorrow's athletes and communities.



The benefits

This precinct will deliver exciting benefits for the community, including:

- employment with a focus on potential apprenticeships and cadetships,
- more space for local and visiting families to enjoy, including water play and parks,
- space for local artists, historians and cultural professionals,
- educational facilities covering a variety of topics,
- the protection and enhancement of greenspace and vegetation, and
- improved transport infrastructure connecting the site to the city and wider South East Queensland (SEQ) region.

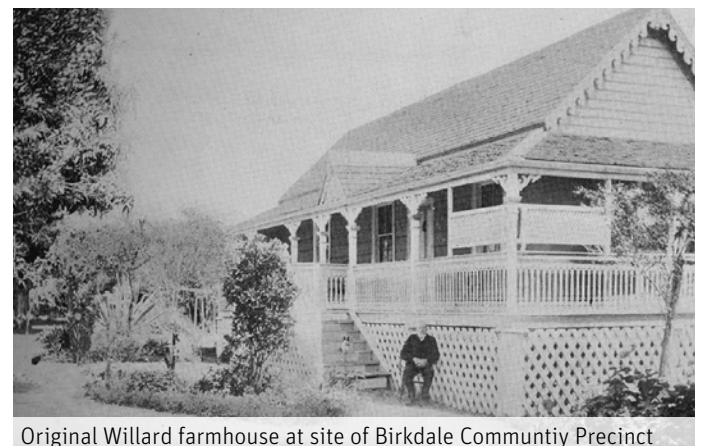
The partnership

Council's plans align with several Federal Government commitments, including creating more employment and apprenticeships, protecting the property's environmental character, supporting our agricultural sector, celebrating our heritage and history and delivering space for families to play.

As home to our canoe slalom venue for the Brisbane 2032 Games, this precinct also aligns with the Federal Government's support of the Games of the XXXV Olympiad and the opportunities it will deliver for tomorrow's athletes and communities.

Council has invested heavily in buying these properties, saving them from being turned into housing. While the final project design is still being completed, support from all levels of government over the next decade will be needed to help make this exciting project a reality.

Council is seeking investment support from the Federal Government to deliver this legacy project.



Original Willard farmhouse at site of Birkdale Community Precinct



Artist's impression of Birkdale Community Precinct

2 Redlands Coast Regional Sport and Recreation Precinct



The opportunity

In 2032 the eyes of the world will be on South East Queensland as we host the Olympic and Paralympic Games and this 101-hectare precinct, situated in the rapidly growing south of the city, will help to meet our community's current and future sport and recreation needs.

Located at Heinemann Road in Mount Cotton, when complete, Redlands Coast Regional Sport and Recreation Precinct is proposed to deliver:

- 13 touch football fields,
- 3 rugby league fields,
- BMX track and criterium track,
- three clubhouses,
- a regional-level play space with pump track, zero-depth water play and kickabout space,
- picnic areas, tracks and trails,
- boardwalks and rehabilitated wetlands, and
- more than 800 carparks.

Preliminary and detailed design is underway with construction on Stage 1 due to begin later this year, delivering BMX and criterium tracks, regional play space, carparks and other essential infrastructure.



Artist's impression of Redlands Coast Sport and Recreation Precinct

The benefits

Construction of Stage 1 alone is set to create 161 direct and indirect jobs and generate significant economic benefits across the city. The facilities and site layout will also enable large sporting events and carnivals to be staged, presenting regular domestic tourism opportunities that will benefit local businesses and create more jobs.

This new facility will be home to a number of local clubs, including; Redlands Rugby League Club, Redlands Touch Association, Redlands BMX Club and Redlands Cycling and Multisport Club.

In addition to providing new sporting facilities, clubhouses and parking for these sports; it will also deliver plenty of space for local families to enjoy, including water play, playgrounds, picnic areas and bushwalking.

Clubs moving to this new precinct will also free up space at other sporting facilities across the city so other clubs can expand. Redlands Coast is expected to welcome an extra 10,000 people over the next five years, predominantly in the south of the city, and this facility will ensure current and new families have somewhere to play the sports they love.

This project will help the Federal Government deliver key commitments including; building a more active Australia, achieving sporting excellence and strengthening Australia's sport industry (Sport 2030, National Sport Plan).

It also aligns with the Federal Government's support of the Brisbane 2032 Olympic and Paralympic Games, including the opportunity for it to be used as a training facility for Olympic and Paralympic teams.

Redlands Coast is expected to welcome an extra 10,000 people over the next five years... this facility will ensure current and new families have somewhere to play the sports they love.

The partnership

To date Council has invested in buying the land for the precinct, as well as committing significant capital and operational costs.

Council is also pleased to have secured \$4.5 million in State Government funding and we are now seeking a partnership with the Federal Government to help make this exciting project a reality.



Artist's impressions of Redlands Coast Sport and Recreation Precinct

3 Transport infrastructure



The opportunity

South East Queensland (SEQ) is one of the fastest growing regions in Australia and, like all SEQ communities, Redlands Coast is experiencing congestion and growth-related pressures.

To ensure residents can travel around the city safer and faster, Council is looking for a commitment from the Federal Government to partner with the State Government and Council to deliver a number of transport projects, including the duplication of the Cleveland Rail line and the Eastern Busway.

The benefits

Duplication of the Cleveland Rail line

With a single line servicing Redlands Coast, travel via rail has become unviable. According to the State Government's SEQ Regional Transport Plan (SEQ RTP), it is faster to drive to the Brisbane CBD than travel by public transport, with it currently taking 64 minutes to travel from Cleveland to Central Station by rail.

While it is acknowledged rail is traditionally State Government transport infrastructure, recent examples of the Federal Government investing in South East Queensland rail projects include the Beerburrum to Nambour upgrade and Brisbane Metro.

These projects show there is a commitment at a Federal Government level to relieve road congestion through rail investment and Council is seeking a commitment to help make the long-awaited Cleveland Rail duplication a reality.

In addition to servicing the Redlands and parts of Brisbane, the Cleveland rail line will also connect a number of venues for the Brisbane 2032 Olympic and Paralympic Games, including the Birkdale white water facility and sailing at Manly. Duplicating the Cleveland rail line will ensure people can travel via rail effectively, reducing reliance on private vehicles and reducing congestion.

The Eastern Busway

As highlighted in the *Redlands Coast Transport Strategy and Council of Mayors (SEQ) People Mass Movement Study* an extension of the Eastern Busway as a dedicated corridor to Capalaba, is considered critical transport infrastructure.

While it is noted the State Government is currently prioritising the Eastern Transitway, Council believes this is an interim measure only and the priority should be delivering the full Eastern Busway as previously announced.

Council is also partnering with Shayher Corporation to revitalise the Capalaba Central Business District (CBD). Combined with other exciting projects in the north of the city, including the Birkdale Community Precinct, the Capalaba CBD project provides the perfect catalyst to prioritise delivery of the Eastern Busway.

The partnership

The recently signed SEQ City Deal includes funding to plan regional infrastructure. Council believes both of these projects should be included in this planning and is looking to partner with the Federal Government to plan and ultimately deliver these much needed projects.



Like all SEQ communities, Redlands Coast is experiencing congestion and growth-related pressures

4 Increased funding for Council's on-the-ground koala research and conservation projects



The opportunity

Following prolonged drought, the black summer bushfires, and the cumulative impacts of disease and urbanisation, Koalas were officially classed as endangered under the *Environment Protection and Biodiversity Conservation Act (EPBC Act) 1999* on 11 February 2022.

While the federal government also recently announced an additional \$50 million investment in koala protection, it is noted none of this funding was specifically directed to support councils in carrying out existing or planned koala conservation initiatives and actions.

Council recognises the need for increased partnerships and a coordinated effort across all levels of government to protect koala populations, and is seeking specific support from the federal government to deliver a series of on the ground koala research and conservation programs across the city.

The benefits

Redland City Council is a recognised leader in Local Government koala conservation in South East Queensland.

Our focus on understanding the science and developing partnerships to help protect our local koala population is a key strategy outlined in our *Redlands Coast Koala Conservation Plan and Action Plan 2022 -2027*.

The plan identifies a robust science-based approach to koala conservation that is supported by strong actions to protect and retain the local koala population.

This includes innovation such as the development of a Bluetooth-based tracking program, to encourage citizen science koala research in tandem with university research partnerships to combat disease and increase understanding of koala movement and population dynamics.

Bluetooth-tracking makes it easier for the community to observe and report koalas in their natural habitat. It also aids the development of conservation-based tourism.

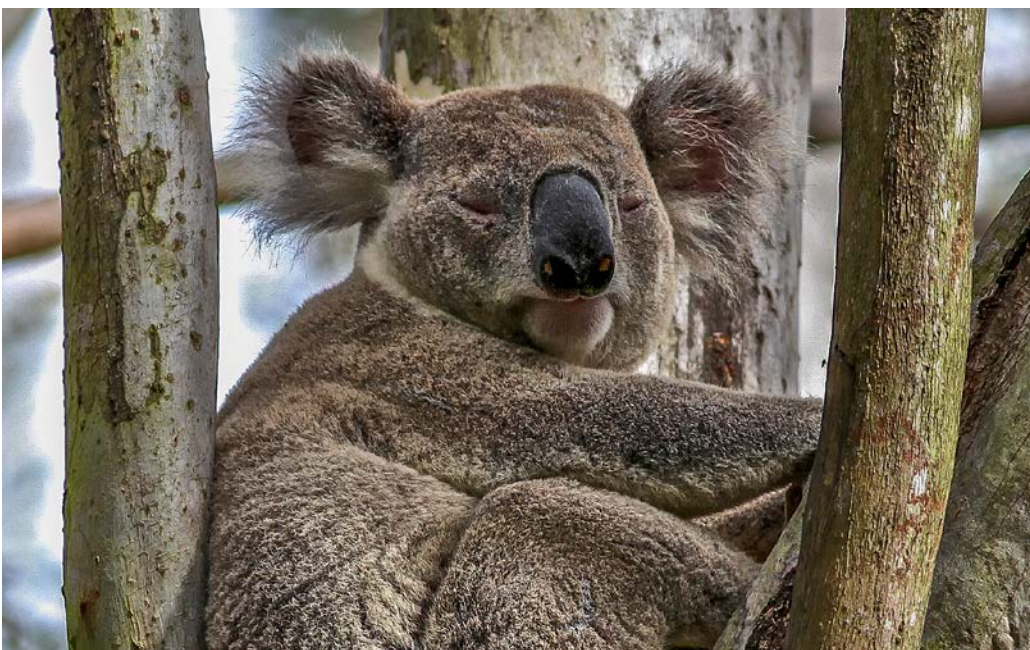
The koala is a globally recognised iconic species and is the number one Australian animal that tourists want to see when holidaying here.

With South East Queensland hosting the 2032 Olympic and Paralympic Games, supporting programs such as these have the potential to grow the region's tourism market and deliver significant economic and environmental benefits.

The partnership

Council is seeking financial support from the Federal Government to continue our innovative koala research and conservation efforts.

Ideally we would welcome the opportunity to develop a strategic partnership with the Federal Government that includes long term funding and robust research outcomes to better understand how all levels of government can work together to protect koala populations.



Supporting these on-the-ground initiatives will provide a coordinated and innovative research and conservation program

5 Internet/mobile connectivity



The opportunity

Parts of Redlands Coast have significant mobile and internet connectivity issues, which not only create challenges for local business but also community safety concerns. This is particularly so for our island communities where isolation is a concern during an emergency.

To help combat these challenges, Redland City Council would welcome a Federal commitment to the following projects:

- improved mobile coverage across the city, and
- improved internet connectivity to support local businesses to grow and access national and international markets.

The benefits

Improved citywide mobile coverage

Following ongoing advocacy, Council acknowledges the Federal Government's commitment for new mobile phone towers on North Stradbroke Island (*Minjerribah*) and Russell Island. Despite this welcome investment, mobile phone coverage remains an issue in a number of areas of the city and requires further Federal Government investment.

Additionally, during the February 2022 flooding event several local towers lost power, resulting in a loss of service for areas of the city. With parts of our city (particularly our islands) isolated, existing towers servicing these communities require resilience upgrades or secondary power options.

Improved internet connectivity to support local business grow and access national and international markets

Currently about 60 per cent of Redlanders of working age leave the city each day to work or study. Independent surveys with local businesses have identified internet connectivity as one of the greatest impediments to local economic growth. The surveys revealed that poor connectivity had forced a number of businesses to leave our city and re-establish in areas of better and more reliable connectivity.

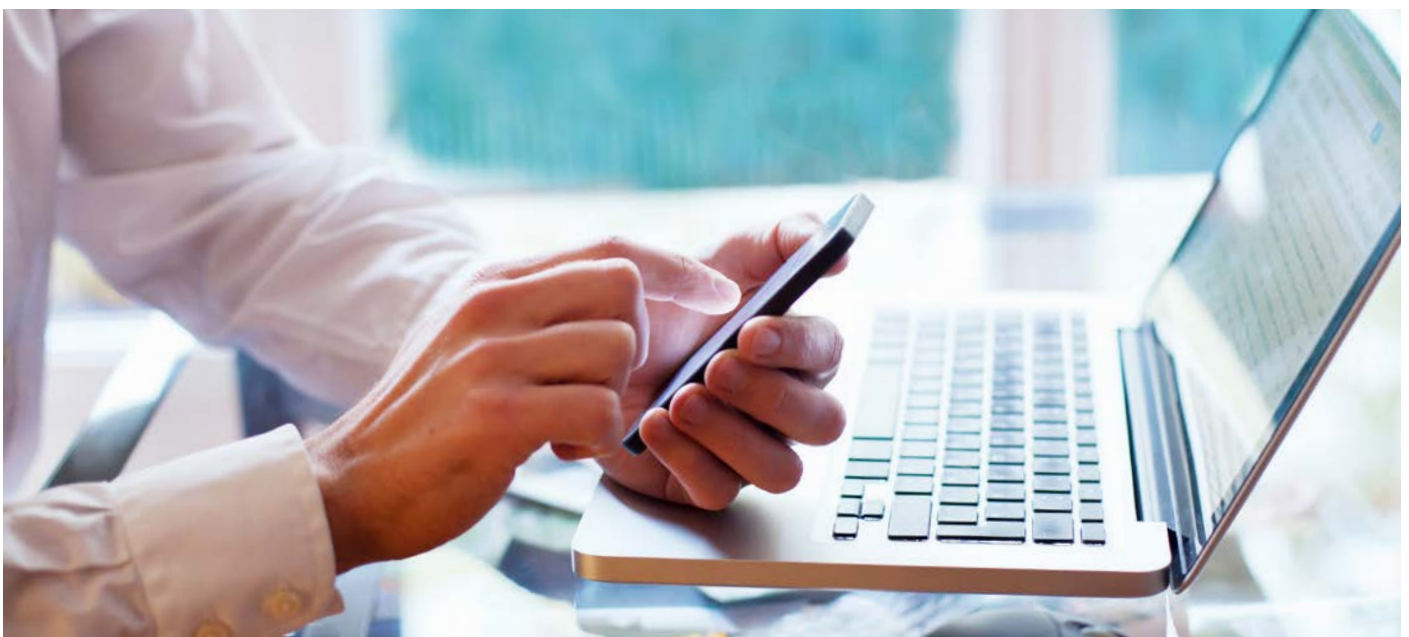
Providing fast and reliable internet connectivity would lay the foundations for economic growth in the city, particularly in the key economic hubs of Cleveland and Capalaba.

Council's Fibre Expansion Project aims to connect key economic precincts across the city, with the opportunity for local business to benefit from these connections. With the support of the State Government, Stage 1 of the project has been completed successfully, with three additional stages under consideration.

Independent surveys with local businesses have identified internet connectivity as one of the greatest impediments to local economic growth.

The partnership

Council is seeking a commitment from the Federal Government to partner with Council to deliver this coverage and connectivity.



6 Redlands Health and Wellness Precinct



The opportunity

Redland Hospital currently has a deficit of beds and specialist services, resulting in local patients having to travel outside the city for hospital and specialist treatment.

Redland City Council has partnered with Queensland Health/Metro South Hospital and Health Services and Mater Misericordiae to master plan the Redlands Health and Wellness Precinct (RHWP), a project that leverages the expansion of the Redland Hospital and Mater Private Hospital.

The benefits

The RHWP project would not only provide improved health services across the city, particularly in specialist and acute tertiary health services, it would also deliver significant employment opportunities.

Health accounts for more than 16 per cent of local jobs and delivering the health and wellness precinct would provide employment and training opportunities in key areas, including research and development and advanced medical goods manufacturing.

The partnership

Council is seeking a commitment from the Federal Government to partner with Council and the State Government on the next stage of the planning process, including providing funding to assist with project delivery.

We are also looking for a commitment to help fund additional specialist medical services, including oncology and birthing services, as well as initiatives to address health needs particularly for our island communities.

Health accounts for more than 16 per cent of local jobs and delivering the health and wellness precinct would provide employment and training opportunities in key areas.



7 Small business and innovation



The opportunity

Small business is the lifeblood of the Redlands Coast economy. Almost 40 per cent of businesses in the city are small to micro businesses, accounting for approximately 88 per cent of local employment. Redlands Coast also has an active innovation sector, with passionate and capable locals exploring innovation across many areas of business.

Despite this local passion, the local business sector faces a number of challenges to success, including:

- the absence of a dedicated small business support hub,
- low self-containment of 43 per cent (based on ABS 2016 Census data), meaning 57 per cent of working residents leave the city to work, and
- ongoing COVID-19 challenges.

Redlands Coast also has an active innovation sector, with passionate and capable locals exploring innovation across many areas of business.

The benefits

Supporting local business will deliver significant benefits for the community, including:

- generating local employment, reducing the need for residents to leave the city for work,
- connecting existing local businesses with regional, state, national and international customers,
- better economic and social outcomes for the community, and
- fostering increased innovation and entrepreneurialism.

The partnership

Council is seeking a Federal Government commitment to support three key outcomes for local business:

- investment to support the key growth sectors identified in Council's Economic Development Framework,
- funding for a local innovation and growth hub to provide targeted local businesses with temporary accommodation and access to coaching, mentoring and networking, and
- a commitment in funding critical infrastructure upgrades that enable businesses to thrive, including transport and internet connectivity.



8

Increased support to combat housing pressures, including provision of social housing and reducing homelessness



The opportunity

Housing pressures are being experienced across the nation, with a rise in the cost of housing products and skilled labour increasing the costs of buying and renting.

Redlands Coast has areas of socio-economic disadvantage that are potentially more susceptible to these pressures, including the Southern Moreton Bay Islands which are in the third Socio-Economic Indexes for Areas (SEIFA) percentile for Australia. This means that 97 per cent of communities in Australia are better off against social and economic indicators.

Additionally, a shortage of social housing and associated services is adding to these housing pressures, increasing incidents of homelessness and people sleeping rough across our city.

A shortage of social housing and associated services is adding to housing pressures, increasing incidents of homelessness and people sleeping rough.

The benefits

A more accessible and affordable housing market provides stability for the community and enables residents to remain near their support networks.

Additionally, more support for those requiring social housing and associated services will ensure our residents remain in the city, contributing to the community's overall social and economic fabric.

The partnership

Council is seeking support from the Federal Government to combat housing pressures, including social housing and homelessness.

Council has a number of projects currently under consideration where associated services and departments could be established to support those requiring housing support and we would welcome an opportunity to partner with the Federal Government to establish these services.





 redland.qld.gov.au

 3829 8999    

